

# GREENPEACE

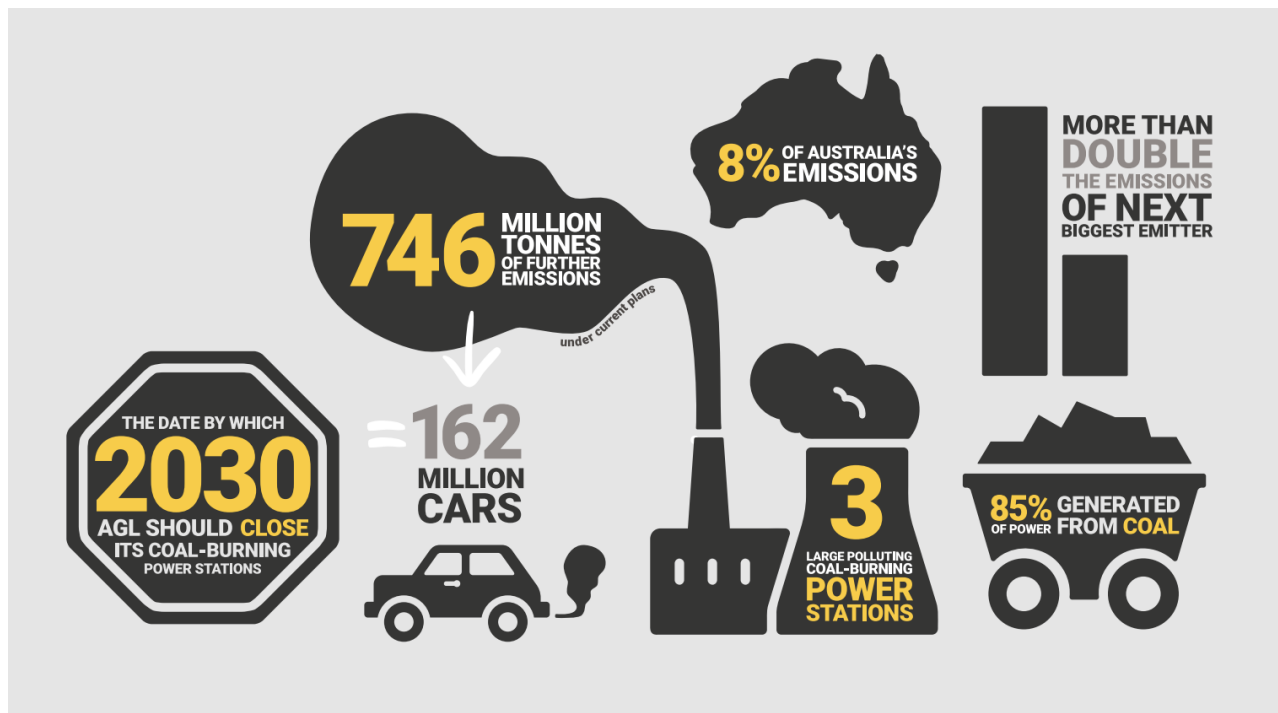
## AGL exposed as Australia's biggest obstacle to net zero emissions: Greenpeace report

-----EMBARGOED UNTIL 6am, Wednesday 5 May, 2021-----

Greenpeace Australia Pacific's new report, *Coal-faced: exposing AGL as Australia's biggest climate polluter*, breaks through AGL's 'green' public image to reveal the company as Australia's biggest obstacle to climate action.

*Coal-faced* finds that AGL is Australia's biggest emitter, responsible for 8 per cent of Australia's greenhouse gas emissions from all sources, and a whopping three quarters of all power station environmental breaches since 2015.

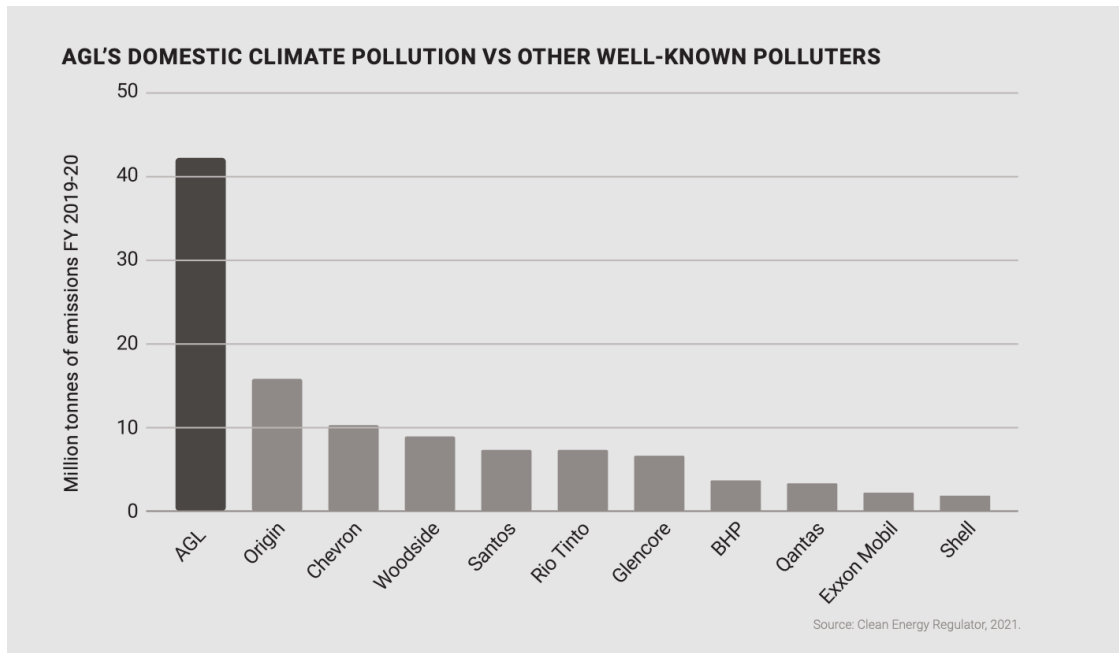
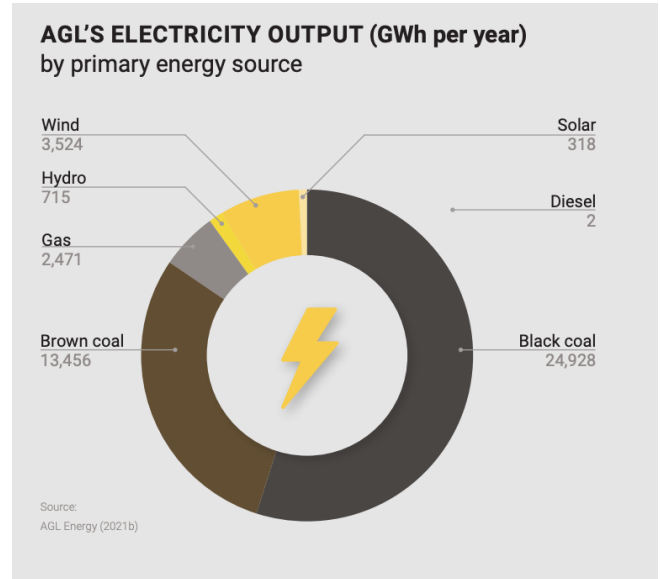
Unless AGL commits to shut its coal-burning power stations by 2030 and replace them with new, renewable generation, Australia can't reach net zero emissions.



# Key findings

## Carbon emissions

- AGL is Australia's biggest single carbon emitter, responsible for **42 million tonnes of greenhouse gas emissions per year**, or more than 8 per cent of Australia's total emissions from all sources - the equivalent of **9 million cars on the road**.
- AGL is responsible for double the carbon emissions of Australia's second biggest electricity generator and more than BHP, Rio, Glencore, and Qantas combined.
- AGL currently generates **85 per cent of its power from coal**, with renewables making up just 10 per cent, barely up from 9 per cent in 2015.
- Under AGL's current plans, it will continue to burn coal for electricity until **2048**.



## Coal closure

Keeping AGL's coal-burning power stations running to the end of their life will result in **746 million additional tonnes of carbon emissions**: the same amount of greenhouse gases as produced by 162 million cars on the road in one year.

- In the time that AGL has owned the Loy Yang A Power Station, it has released more than **148 million tonnes of emissions**. AGL plans to keep Loy Yang A open until the end of its

technical life in 2048. By then, it will have released at least a **further 520 million tonnes** of emissions.

- Since AGL bought Liddell Power Station in 2014, Liddell has produced **more than 49 million tonnes of carbon emissions**. At present, AGL plans to close the coal-burning power station completely in 2023. By then, it will have released a **further approximately 16 million tonnes** of emissions.
- Since AGL has owned Bayswater, the station has released **more than 84 million tonnes of carbon emissions**. At present, AGL plans to keep Bayswater Power Station open until the end of its technical life in 2035. By then, the power station will release approximately **210 million tonnes of additional emissions**.

## Environmental breaches

- Since 2015, the AGL-owned and operated Liddell, Bayswater and Loy Yang A coal-burning power stations have **breached their licences 111 times**, accounting for roughly three quarters of all power station violations.
- These breaches include discharging more than 1,500 cubic metres of **toxic coal ash** slurry into Bayswater Creek; releasing 6000 litres of **sulphuric acid** into stormwater drains; and numerous instances of **coal ash** being released into the air of nearby communities.

## Human health impacts

- Leading epidemiologist Dr Ben Ewald estimates that nearly **3,500 additional deaths** attributable to coal-burning power stations will occur in NSW alone between 2018 and 2042. More than **680 of these deaths are expected to be caused by Bayswater Power Station** if it stays open until 2035 as planned.
- In addition, if AGL does not retire Bayswater Power Station early, it is expected to cause more than 500 additional low birth weight babies and more than 800 new cases of diabetes.

## Spin versus reality

- AGL is a coal company masquerading as a renewable energy company - despite the company's 'sustainable' branding, 85% of AGL's energy is generated from coal, with renewable energy making up just 10% of energy generated, and the remaining 5% coming from gas - a polluting fossil fuel.
- Rather than investing in initiatives to reduce emissions, **AGL spends most of its money on maintaining its ageing, unreliable coal assets**, spending \$2.7bn largely on coal-asset maintenance over 2014-20, with just \$1.8 billion on new business and energy initiatives over the same period.

## Alternatives to burning coal

- Renewable energy technologies exist and can be implemented at scale to replace AGL's ageing coal-burning power stations, as has happened elsewhere around the world.
- In the **UK**, in 1990 coal accounted for 75 per cent of all of its electricity generation. In 2009 that figure had dropped to 30 per cent, with coal now accounting for just 2 per cent of Britain's total electricity generation. **The handful of coal-burning power station units that remain operational will be closed by 2025**, under a plan legislated by former Conservative Party Prime Minister Theresa May.
- Closer to home, 80 per cent of **New Zealand's** electricity supply currently comes from renewable energy, with plans to reach 100 per cent by 2030, while **Samoa** leads Pacific Island Countries' decarbonisation efforts, with the nation on track to meet its target of 100 per cent of its electricity being renewable by 2025.

05.05.21